



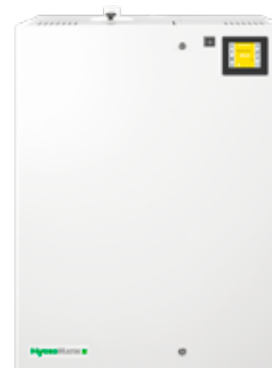
FlexLine Spa Plus technical data

A higher humidification performance is possible by connecting units together.

Type	FLP05	FLP08	FLP15	FLP25	FLP30	FLP40	FLP50
Steam output [kg/h]	4.6-5.5	7.6-9.0	13.7-16.4	22.7-27.1	27.4-32.7	36.5-43.5	45.5-54.3
Electrical connection ⁽¹⁾	380-415V / 3Ph / 50-60Hz						
Rated power [kW]	3.4-4.1	5.7-6.8	10.3-12.3	17.1-20.3	20.6-24.5	27.3-32.6	34.1-40.7
Nominal current [A]	9.0-9.9	15.0-16.3	15.6-17.1	25.9-28.3	31.2-34.1	41.5-45.4	51.8-56.6
Fuse [A]	3 x 16	3 x 20		3 x 32	3 x 35	3 x 50	3 x 63
Number of steam cylinder	1						
Control	FlexLine mainboard with capacitive 3.5" touch colour display						
Separate control voltage ⁽³⁾	220-240V / N / 2.5A						
Steam hose connection [mm]	1 x 40				1 x 40 ⁽⁴⁾	2 x 40	
Empty weight [kg]	32		35		41		
Max. filling capacity [l]	15				30		
Operating weight [kg]	47		50		71		
Dimensions WxHxD [mm] ⁽⁵⁾	650 x 855 x 380						
Water connection	Fully demineralised water / cleaned condensate / partially softened water / tap water of varying qualities, 1 to 10 bar, for 3/4" external thread						
Drain water connection	Connection Ø 1 1/4"						

We reserve the right to make technical changes.

- (1) Other voltages upon request.
- (3) Internal control voltage upon request.
- (4) Incl. Y-piece DN40.
- (5) Outer dimensions of width and depth.
Height incl. drain connection.



HygroMATIK [®] SPA

member of CAREL group 

HygroMatik GmbH
Lise-Meitner-Str. 3
24558 Henstedt-Ulzburg
Germany

T +49 4193 895-0
F +49 4193 895-33
hy@hygromatik.de
www.hygromatik.com