

Technical Data WL-RO-170 / WL-ROB-170

Volume flow rate permeate [l/h]	170 *
Required raw water volume flow rate [l/h]	approx. 340
Desalination rate [%]	approx. 96 - 98
Yield [%]	approx. 50 *
Inlet pressure of raw water [bar] (minimum/maximum)	2 - 6 **
Discharge pressure of permeate [bar] (via pressure switch)	1 - 3.5
Water installations	¾
Electric connection [V/Hz]	230 / 50
Electric connected load [kW]	0.56
Empty weight [kg]	30
Operating weight [kg]	approx. 48
Height [mm]	1100
Width [mm]	650
Depth [mm]	340

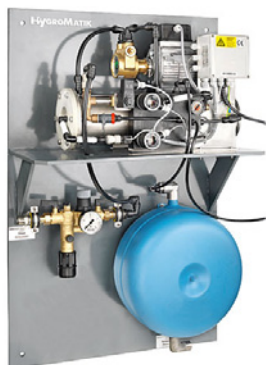
* All performance data is based on a water temperature of 15°C and a total raw water salt content ≤ 750 ppm.
Reducing the raw water temperature lowers the permeate output by 3% per 1°C.

** 1 bar higher than permeate pressure (only for WL-ROB-170)

Subject to technical amendments

Our Service for you

- HygroMatik distributors in more than 35 countries worldwide
- Technical hotline +49 4193 859 - 293 or hotline@hygromatik.com
- Manuals, planing tools and workshop offers are available online at www.hygromatik.com



HYGROMATIK®
WE HUMIDIFY THE AIR

HygroMatik GmbH
Lise-Meitner-Str. 3
24558 Henstedt-Ulzburg
Germany

T +49 4193 895-0
F +49 4193 895-33
hy@hygromatik.de
www.hygromatik.com